

POLI 11D: Week Four Section

Mariana Carvalho

University of California, San Diego

October 26, 2017

Reminders

- Office Hours/Review Section: 9h-11h SSB 333
- Office Hours: 11h-12h SSB 343
- Section slides available on my website: maricarvalho.com

Midterm

- Monday Oct 30
- Closed-book
- One essay and short answer questions
- Bring your own blue books
- If you are worried about time constraints and have not taken an essay-based exam recently, you might want to practice making a quick outline and writing an essay while timing yourself
- For any question that asks you "what is _____" or "why does _____ matter", make sure you don't only define the term but also mention its significance/an example
- Write down an outline to structure your essay and summarize what questions and arguments will be addressed in your introductory paragraph

From the study guide provided by Prof. Strom

Essay question:

- What are the most important methods (selection principles) through which public officials are chosen? What are their advantages and disadvantages? Describe especially different methods by which elective offices are filled (electoral systems). Give examples, especially from British politics, wherever you can.

Short Answer Questions:

- Briefly identify what is meant by Whitehall in British politics.
- What is an exclusive governing party? Give examples.
- Briefly identify political socialization and three important structures that perform this function.

Review Section

- Groups of 3 or 4
- Each group will answer the question as they would answer in the midterm
- Write down the main points
- Choose one person to answer the question to the class

Review Section

Describe the characteristics of representative democracy and the connections between economic development and democratization

Review Section

Why are we unable to compare political systems simply by describing the different structures we find in them?

Review Section

Why does political culture matter?

Review Section

Table 3.1 Political Culture

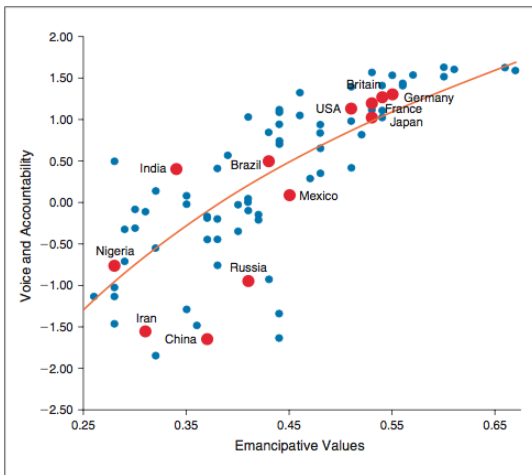
There are three levels of political culture, which tap different orientations toward politics.

Level of Political Culture	Examples
System	Pride in nation National identity Legitimacy of government
Process	Role of citizens Perceptions of political rights
Policy	Role of government Government policy priorities

Review Section

Figure 3.4 Culture Matters

The figure shows the congruence of emancipative values and democratic development.



Review Section

What are the main types of interest groups?

Review Section

What is Duverger's Law? Which two effects does it imply?

Review Section

What is the median voter result, and why does it pertain only to two-party systems?

Review Section

Describe the features of a constitution, focusing on decision rules,
and explain why Britain is unusual

Review Section

Compare and contrast democratic and authoritarian systems

Review Section

Discuss the presidential and parliamentary forms of democratic government, using the United States and Britain, respectively, as examples.

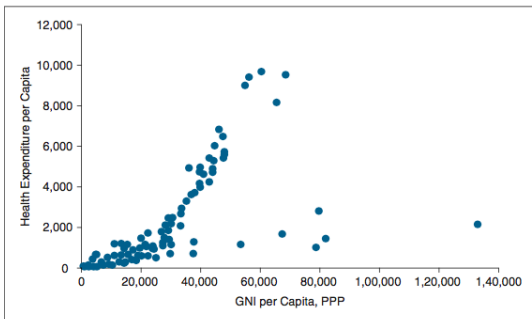
Review Section

What explains the growth of the welfare state?

Review Section

Figure 6.2 Economic Development and Government Health Spending

Government spending on health policies depends greatly on the country's level of economic development.



Source: World Bank, World Development Indicators, data downloaded from <http://databank.worldbank.org/data> on January 9, 2017.

Review Section

What are the arguments for and against the use of the first-past-the-post electoral system in Britain?

Review Section

Table 7.4 Social Differences in Voting

In a multiparty system, no party has majority support in any social group.

	Conservative	Labour	UKIP	Lib Dem	Other
Gender					
Women	37%	33%	12%	8%	10%
Men	38%	30%	14%	8%	10%
Age					
18–24	27%	43%	8%	5%	17%
25–54	35%	38%	11%	6%	10%
55–64	37%	31%	14%	9%	9%
65 and over	47%	23%	17%	8%	5%
Social Class					
Middle, professional	45%	26%	8%	12%	9%
Lower middle	41%	29%	11%	8%	11%
Skilled manual	32%	32%	19%	6%	11%
Unskilled, low income	27%	41%	17%	5%	10%
Ethnic Group					
White	39%	28%	14%	8%	11%
All BME	23%	65%	2%	4%	6%
Education					
University	35%	34%	6%	11%	14%
Good secondary	37%	31%	11%	8%	13%
Some secondary	38%	30%	20%	5%	7%

Sources: Gender, age, social class, ethnic group: Ipsos MORI, *How Britain Voted in 2015*. Education: YouGov, *How Britain Really Voted, 105*, as reported in *General Election 2015: House of Commons Library Briefing Paper CB7188*, 53–54. Used with permission.